



Antibiotic Stewardship in an Outpatient Setting

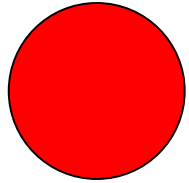
Jenny Winkler, MPH, CIC, MLS(ASCP)

July 11, 2017

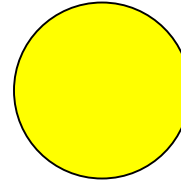
Disclosure

- I have no actual or potential conflict of interest in relation to this program or presentation.

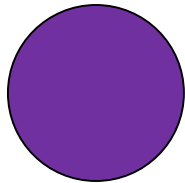
Introductions/Tell Us a Little About Yourself



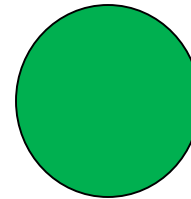
What's your favorite food?



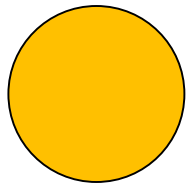
What's something you are good at doing?



What's your favorite movie?



What is your favorite sports team?



Name one thing you will do or have done this summer.

Objectives

- Discuss antibiotic resistance
- Review statewide data
- Discuss CDC Outpatient Antibiotic Stewardship Core Elements

Patient Story

The Story of Peggy Lillis: The Other Side of Antibiotics

Antibiotic Resistance

Estimated minimum number of illnesses and deaths caused annually by antibiotic resistance*:

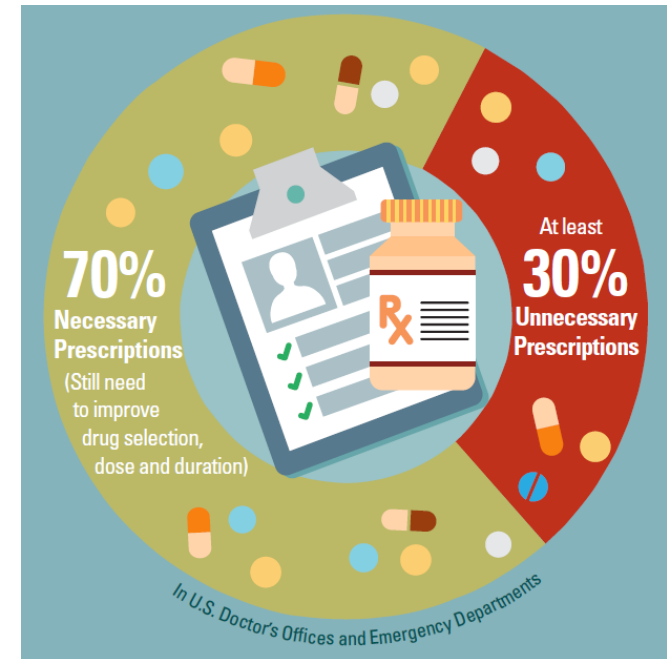
At least  **2,049,442** illnesses,
 **23,000** deaths

**bacteria and fungus included in this report*

\$20 billion in excess direct healthcare costs annually

Why Antibiotic Stewardship?

- Inappropriate antibiotic use is primary modifiable driver of antibiotic resistance
- High levels of antibiotic use, especially in outpatient settings
- It's a matter of patient safety

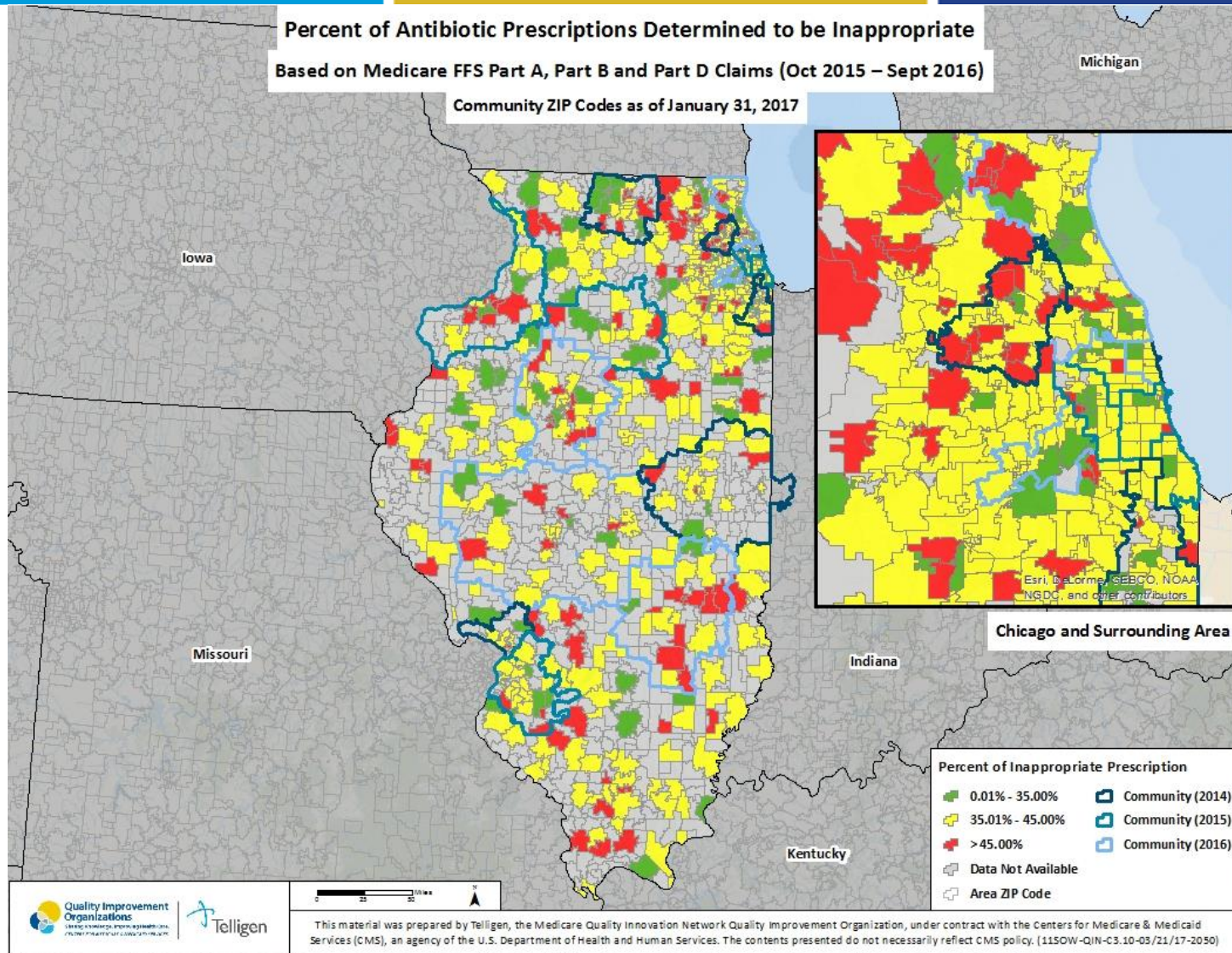


Shehab N, et al. Clin Infect Dis 2008;47:735–43. Gonzales R et al. Clin Infect Dis 2001;33:757–62. Suda et al. J Antimicrob Chemother 2013; 68: 715–718

Fleming-Dutra KE et al. JAMA 2016;315:1864–73

https://www.gov.uk/government/uploads/system/uploads/attachment_data/file/362374/ESPAUR_Report_2014_3.pdf
<https://www.folkhalsomyndigheten.se/pagefiles/20281/Swedres-Svarm-2014-14027.pdf>

Inappropriate Antibiotic Prescribing in Illinois



C. difficile in the Illinois

- 15,286 Cases Reported
 - Timeframe: 10/2015-9/2016
- Types of onset:
 - Community Onset (CO)
 - Community Onset Health Care Facility Associated (CO-HCFA)
 - Hospital Onset (HO)

Type of Onset	% of Cases
CO	53%
CO-HCFA	16%
HO	31%

State Partners



Illinois Health and Hospital Association



The Core Elements of Outpatient Antibiotic Stewardship



- **Commitment:** demonstrate dedication to and accountability for optimizing antibiotic prescribing and patient safety



- **Action for policy and practice:** implement at least one policy or practice to improve antibiotic prescribing, assess whether it is working, and modify as needed



- **Tracking and Reporting:** monitor antibiotic prescribing practices and offer regular feedback to clinicians or have clinicians assess their own antibiotic use



- **Education and Expertise:** Provide educational resources to clinicians and patients on antibiotic prescribing and ensure access to needed expertise on antibiotic prescribing

Please Contact any of our Quality Innovation Network Representatives to Learn More

Jenny Winkler, MPH, CIC, MLS(ASCP)

jennifer.winkler@area-d.hcqis.org | 630-928-5822

Gina Jones, MPS

gina.jones@area-d.hcqis.org | 630-928-5826

Debbie Camacho, RN, MA

debbie.camacho@area-d.hcqis.org | 630-928-5815

This material was prepared by Telligen, the Medicare Quality Innovation Network Quality Improvement Organization, under contract with the Centers for Medicare & Medicaid Services (CMS), an agency of the U.S. Department of Health and Human Services. The contents presented do not necessarily reflect CMS policy.11SOW-IL-C3.10-06/15/17-2182